

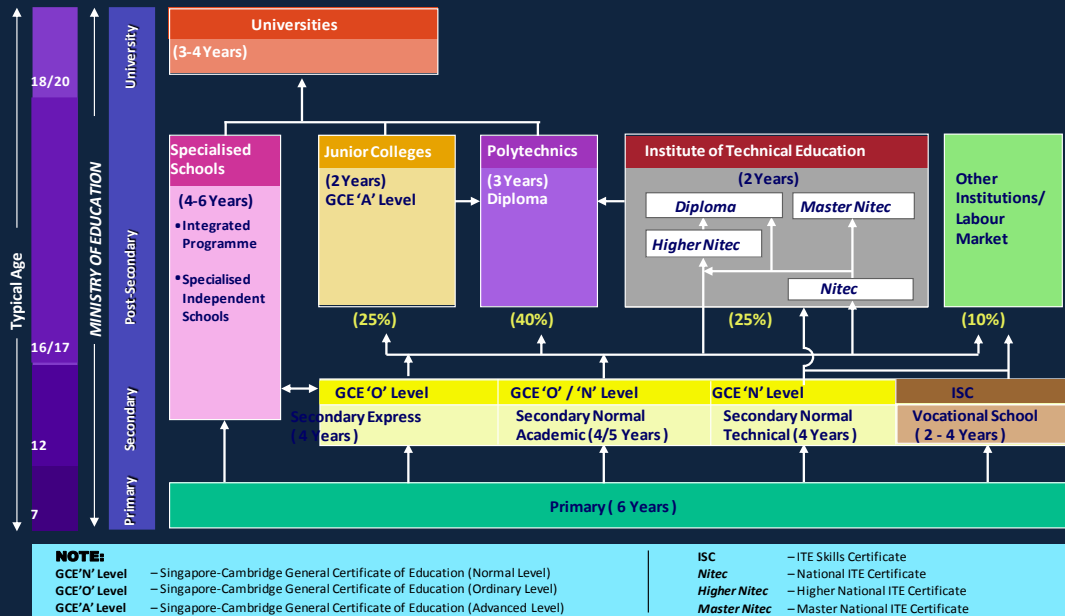
# Vocational and Technical Education in Singapore

## OVERVIEW

Under the Ministry of Education, the Institute of Technical Education (ITE) and the 5 polytechnics are the major suppliers of skilled labor force in Singapore. The Ministry of Manpower via the Singapore Workforce Development Agency oversees continuing education and training for adults at the national level.

ITE provides pre-employment vocational and technical training to secondary school leavers and also continuing education and training to adults. Current and relevant occupation-based courses are offered by the Schools of Applied & Health Sciences, Business & Services, Design & Media, Electronics & Info-Comm Technology and Engineering.

ITE graduates may join the workforce or progress to one of the 5 polytechnics that offer a wide range of specializations including engineering, business studies, accountancy, tourism and hospitality management, mass communications, digital media and biotechnology, nautical studies, nursing, and optometry.



## TVET PATHWAYS IN SINGAPORE

### ITE

2-year course leading to National ITE Certificate (Nitec) & Higher National ITE Certificate (Higher Nitec)

### Polytechnics

3-year course leading to diploma awarded by Nanyang Polytechnic, Ngee Ann Polytechnic, Republic Polytechnic, Singapore Polytechnic, and Temasek Polytechnic

### Tertiary

Upgrading opportunities for polytechnic graduates at

- National University of Singapore
- Nanyang Technological University
- Singapore Management University
- Singapore Institute of Technology
- Singapore University of Design and Technology

## Inclusion of Workforce Skills Qualification (WSQ) into Singapore Standard Education Classification (SSEC)

SSEC Level	WSQ
Other Education (Non-Award Courses/Miscellaneous)	<ul style="list-style-type: none"> <li>• ≥1 WSQ Statement of Attainment at Certificate (C)/ Higher C / Advanced C</li> <li>• ≥1 WSQ Statement of Attainment at Diploma / Specialist Diploma</li> <li>• ≥1 WSQ Statement of Attainment at Graduate Certificate/ Graduate Diploma</li> </ul>
University Postgraduate Diploma / Degree University First Degree	<ul style="list-style-type: none"> <li>• Graduate Certificate</li> <li>• Graduate Diploma</li> </ul>
Professional Qualification and other Diploma	<ul style="list-style-type: none"> <li>• Diploma</li> <li>• Specialist Diploma</li> </ul>
Polytechnic Diploma	<ul style="list-style-type: none"> <li>• Advanced Certificate and Diploma</li> </ul>
Post-Secondary (Non-tertiary): General or Vocational	<ul style="list-style-type: none"> <li>• Certificate, Higher Certificate and Advanced Certificate</li> </ul>
Secondary	<ul style="list-style-type: none"> <li>• At least 3 ESS WPLN Statements of Attainment at Level 5 and above-</li> </ul>
Lower Secondary	<ul style="list-style-type: none"> <li>• At least 3 ESS WPLN Statements of Attainment at Level 3 or 4</li> </ul>
Primary	<ul style="list-style-type: none"> <li>• At least 3 ESS WPLN Statements of Attainment at Level 1 or 2</li> </ul>



Produced by  
**SEAMEO VOTEC Regional Centre**  
 Brunei Darussalam



Updated Augusts 2015

Source:  
 Seng, L. (2010). A Journey of Transformation: Achieving Organisational Excellence.  
 Singapore Workforce Development Agency. (Dec 2009).  
 Singapore Workforce Skills Qualifications (WSQ).